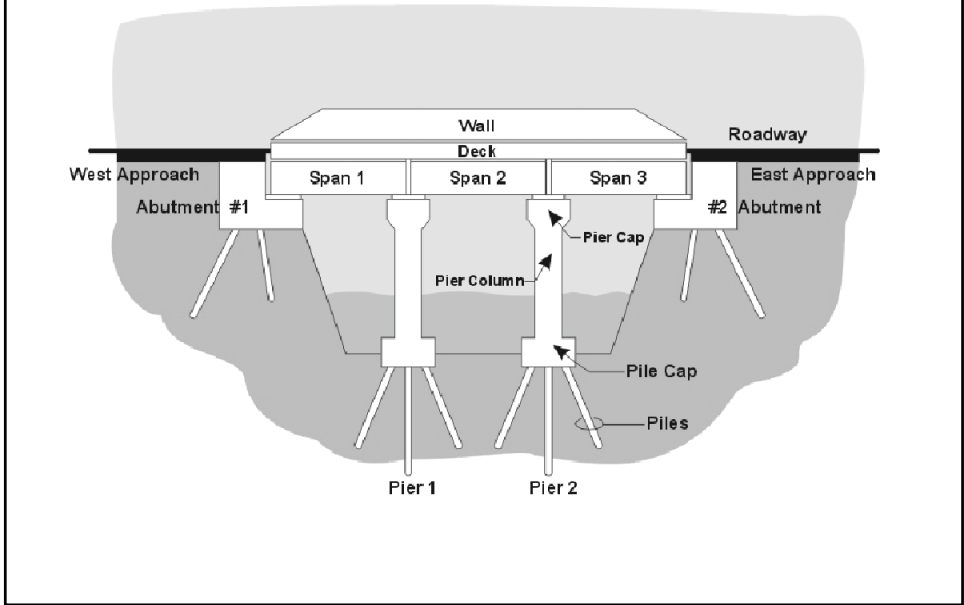


The Project (TIA)



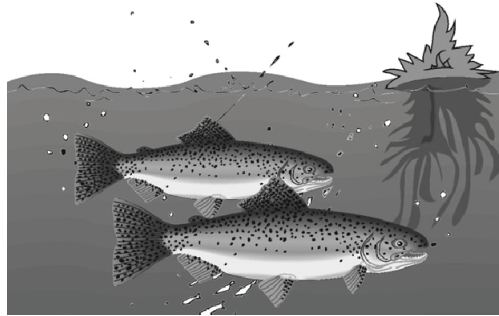
Baseline Schedule

Activity ID	Early Start	Early Finish	Rein	%	Total	2010																	
						JAN	FEB	MAR	APR	MAY	JUN	JUL	AUG										
						1	8	15	22	29	6	13	20	27	4	11	18	25	1	8	15	22	29
1	06JAN10	06JAN10	1	0	0																		
2	07JAN10	20JAN10	10	0	0	NOTICE TO PROCEED																	
3	10JAN10	13FEB10	28	0	7	PILE & SUB SDS - STEEL GRIDDS																	
4	10JAN10	20JAN10	10	0	10	MOBILIZATION																	
5	10JAN10	27JAN10	16	0	10	ORDER & DELIVER PILES																	
6	10JAN10	13JAN10	3	0	17	CLEAR & GRUB APPROACHES																	
7	14JAN10	27JAN10	13	0	57	FORM, REIN. & POUR - ABUT 1																	
8	17JAN10	16FEB10	19	0	6	FORM & POUR - PILE DRIVER																	
9	21JAN10	27JAN10	6	0	10	CORFEROM - PIER 1																	
10	04JAN10	10FEB10	16	0	77	FORM, REIN. & POUR - ABUT 2																	
11	04JAN10	10FEB10	16	0	77	FORM, REIN. & POUR - APP SDS - STEEL GRIDDS																	
12	11FEB10	17FEB10	6	0	0	PILES - PIER 1																	
13	11FEB10	17FEB10	6	0	8	CORFEROM - PIER 2																	
14	11FEB10	17FEB10	6	0	8	GRADE WEST APPROACH																	
15	11FEB10	24FEB10	13	0	5	PILE CAP - PIER 1																	
16	11FEB10	24FEB10	13	0	5	PILES - PIER 2																	
17	11FEB10	24FEB10	13	0	5	CORFEROM - PIER 3																	
18	11FEB10	24FEB10	13	0	5	GRADE EAST APPROACH																	
19	11FEB10	22FEB10	11	0	5	SUBBASE - WEST APPROACH																	
20	11FEB10	24FEB10	13	0	5	BASE COURSE - WEST APPROACH																	
21	11FEB10	02MAR10	19	0	0	COLUMN - PIER 1																	
22	11FEB10	02MAR10	19	0	0	PILE CAP - PIER 2																	
23	11FEB10	02MAR10	19	0	0	PILE CAP - PIER 3																	
24	11FEB10	02MAR10	19	0	7	PILES - PIER 3																	
25	11FEB10	02MAR10	19	0	10	FAB & DELIVER STEEL GRIDDS																	
26	11FEB10	02MAR10	19	0	78	SUBBASE - EAST APPROACH																	
27	11FEB10	02MAR10	19	0	11	SPINAL PAVING - WEST APPROACH																	
28	02MAR10	02MAR10	0	0	78	BASE COURSE - EAST APPROACH																	
29	02MAR10	02MAR10	0	0	10	PILE CAP - PIER 1																	
30	02MAR10	02MAR10	0	0	78	FINAL PAVING - WEST APPROACH																	
31	02MAR10	02MAR10	0	0	0	COLUMN - PIER 2																	
32	02MAR10	02MAR10	0	0	6	PILE CAP - PIER 1																	
33	02MAR10	02APR10	16	0	0	COLUMN - PIER 3																	
34	02MAR10	02APR10	16	0	3	PILE CAP - PIER 2																	
35	02MAR10	02APR10	16	0	0	PILE CAP - PIER 3																	
36	02MAR10	02APR10	16	0	0	REIN STEEL - SPAN 1																	
37	02MAR10	02APR10	16	0	0	REIN STEEL - SPAN 2																	
38	02MAR10	02APR10	16	0	0	REIN STEEL - SPAN 3																	
39	02MAR10	02APR10	16	0	0	FORM DECKS - SPAN 1																	
40	02MAR10	02APR10	16	0	0	FORM DECKS - SPAN 2																	
41	02MAR10	02APR10	16	0	0	FORM DECKS - SPAN 3																	
42	02MAR10	02APR10	16	0	24	REIN & POUR - SPAN 1																	
43	02MAR10	02APR10	16	0	24	REIN & POUR - SPAN 2																	
44	02MAR10	02APR10	16	0	24	REIN & POUR - SPAN 3																	
45	02MAR10	02APR10	16	0	0	FORM DECKS - SPAN 4																	
46	02MAR10	02MAY10	18	0	5	REIN & POUR - SPAN 1																	
47	02MAR10	02MAY10	18	0	5	REIN & POUR - SPAN 2																	
48	02MAR10	02MAY10	18	0	10	FORM DECKS - SPA																	
49	02MAR10	02MAY10	18	0	10	FORM DECKS - SPAN 3																	
50	02MAR10	02MAY10	18	0	15	FORM DECKS - SPAN 4																	
51	02MAR10	02MAY10	18	0	0	CURB & WALLS - SPAN 1																	
52	02MAR10	02MAY10	18	0	0	CURB & WALLS - SPAN 2																	
53	02MAR10	02MAY10	18	0	0	CURB & WALLS - SPAN 3																	
54	02MAR10	02MAY10	18	0	0	CURB & WALLS - SPAN 4																	
55	02MAR10	02JUL10	18	0	0	CLEAN UP & PUNCH LIST																	
56	02MAR10	02JUL10	18	0	0	PROJECT COMPLETE																	

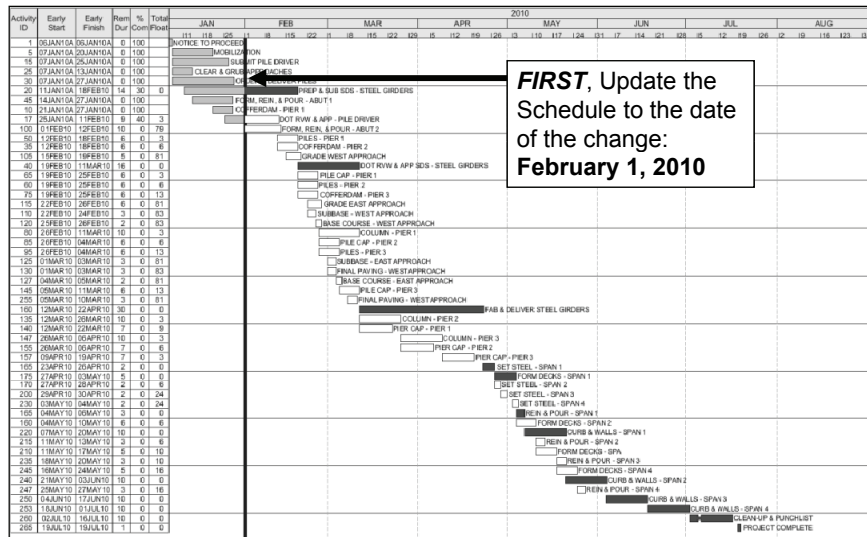
Original Project Completion: July 13, 2010

The Change

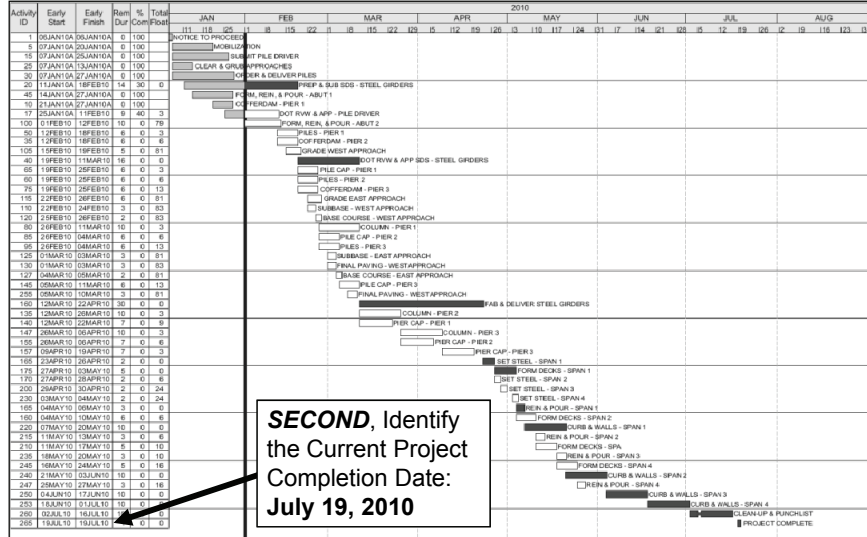
On February 1, the owner informed the contractor that to accommodate the spawning season this year, the project's environmental permit had been modified. The second cofferdam, located in a flowing portion of the river, could not be installed until March.



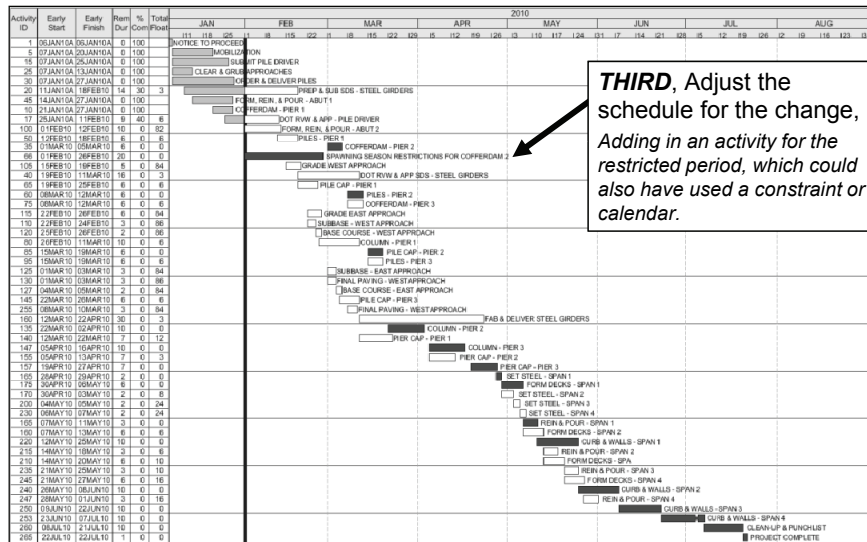
Update for Change



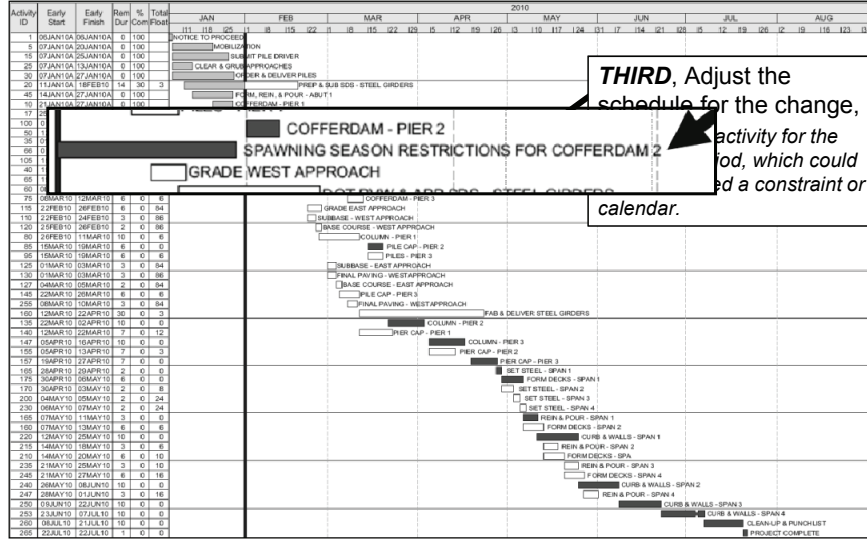
Update for Change



Adjust for Change

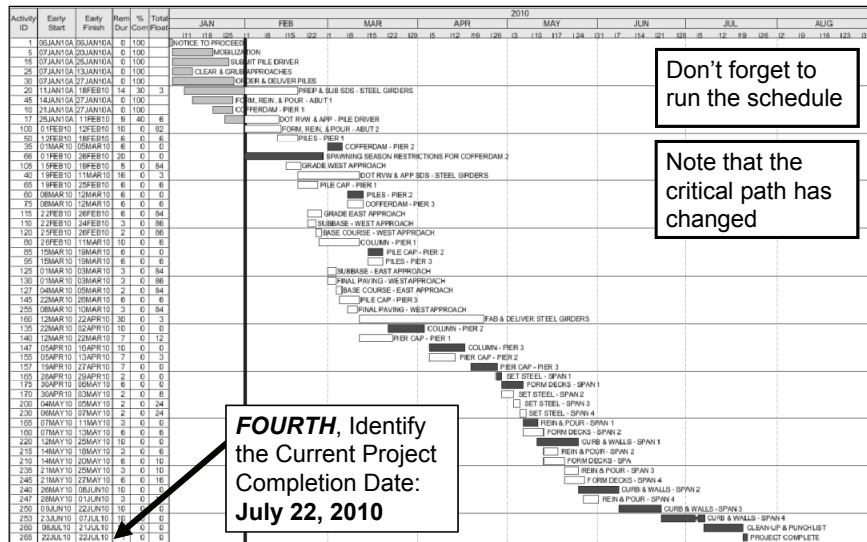


Adjust for Change



THIRD, Adjust the schedule for the change, activity for the calendar.

Adjust for Change



Don't forget to run the schedule

Note that the critical path has changed

FOURTH, Identify the Current Project Completion Date: July 22, 2010

Evaluate the Results (TIA)

- What was the completion date?
 - Before the change: July 19
 - After the change: July 22
- The change order issued for the permit revision should include a 3-day time extension.
- Alternately, the work could be accelerated to mitigate the delay and achieve timely completion.